

# Kaukauna Catholic School System

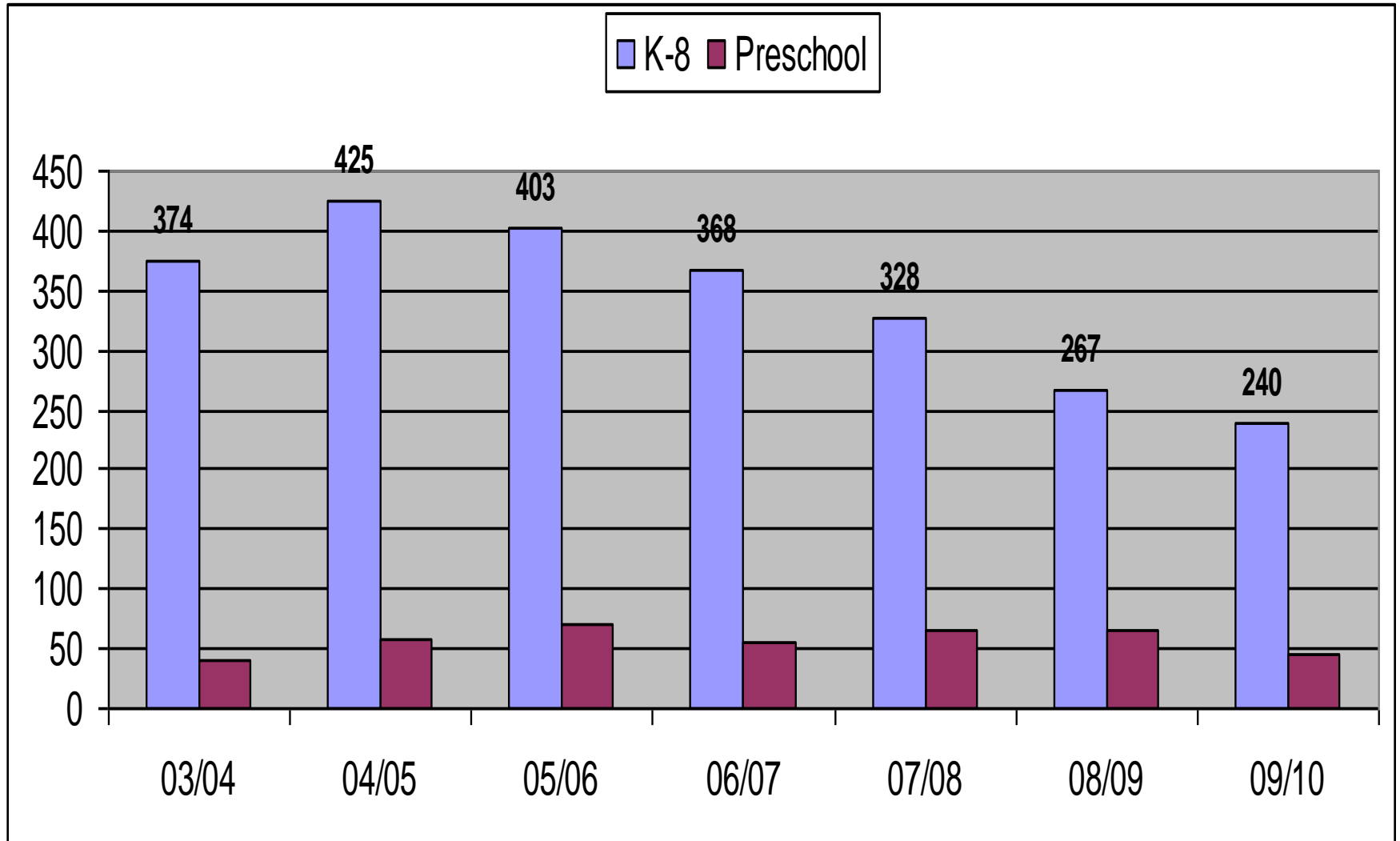
Facts & Figures  
January 13, 2010  
Cyclone Chat

# Topics to Cover

- **Enrollment Trends and Projection**
- Revenues
  - Parish Subsidy
  - Tuition
  - Fundraising and Other
- Costs
- Net Result
  - How are we doing
  - Current issues

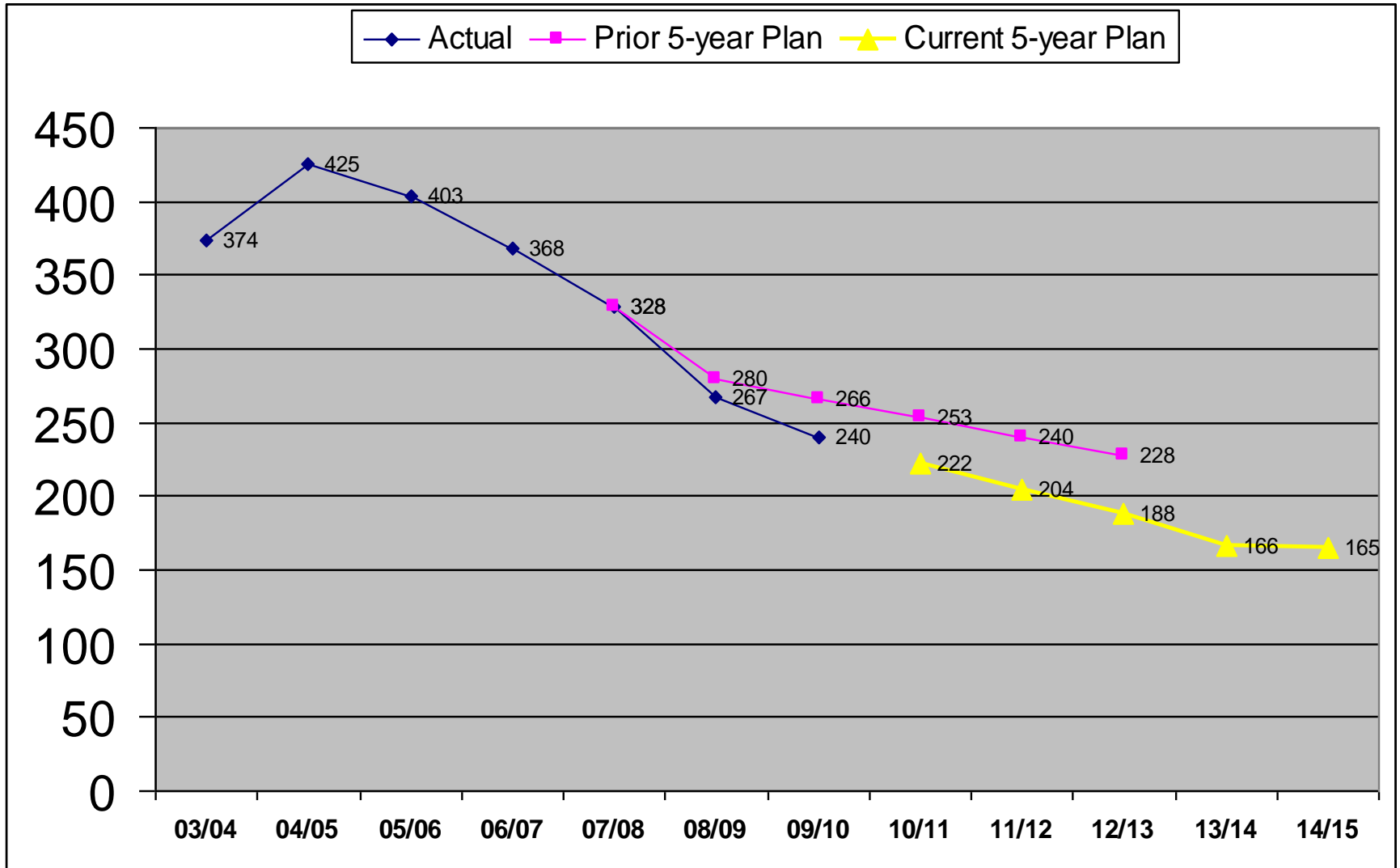
# Declining Enrollment

(We graduate two classes per year, and bring in only one)



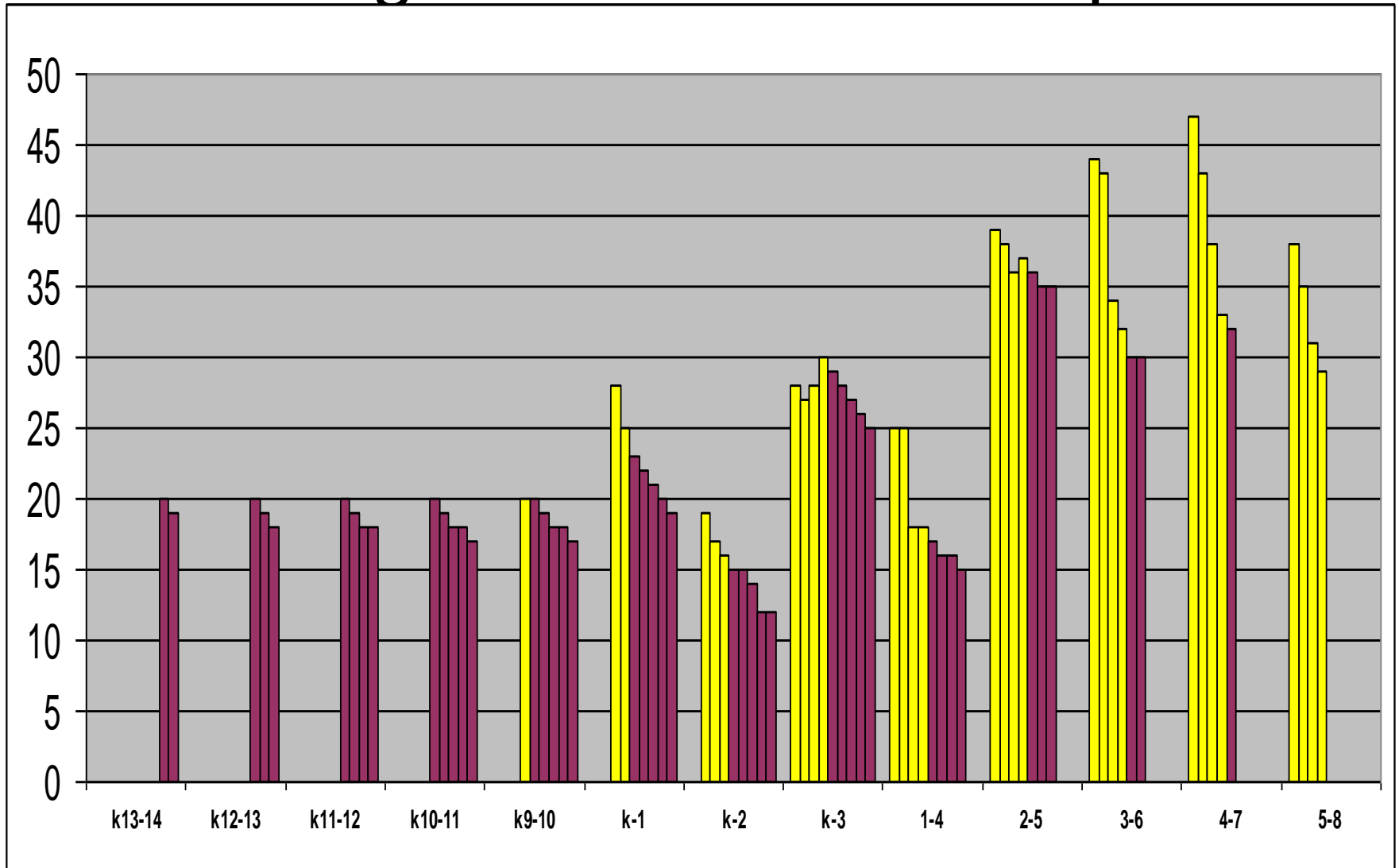
# Projected Enrollment

(two classes vs. one + some attrition from entry levels)



# Enrollment Projection

## Incoming & Retention Assumptions



# Comparison w/ Appleton (ACES)

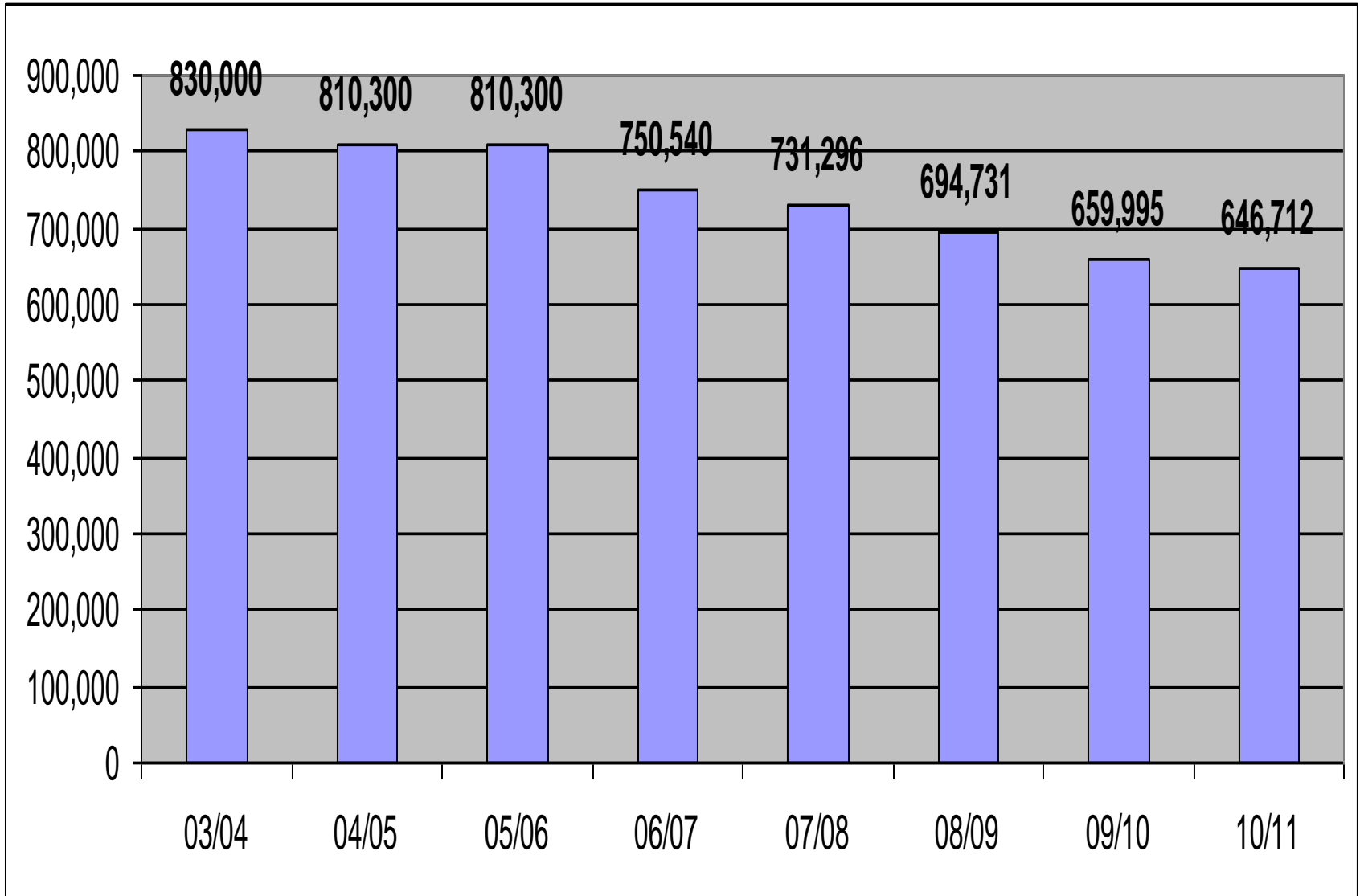
	<u>05/06</u>	<u>09/10</u>	<u>Change</u>	<u>% Chg</u>
<b><u>KCSS</u></b>				
St. Als (incl preschool)	182	106	-76	-42%
Holy Cross	289	179	-110	-38%
<b>Total KCSS</b>	<b>471</b>	<b>285</b>	<b>-186</b>	<b>-39%</b>
<b><u>ACES</u></b>				
St. Bernadette	203	183	-20	-10%
Catholic Central	223	168	-55	-25%
St. Pius X	244	311	67	27%
St. Thomas More	244	186	-58	-24%
St. Joseph Middle	467	346	-121	-26%
<b>Total ACES</b>	<b>1,381</b>	<b>1,194</b>	<b>-187</b>	<b>-14%</b>

# Topics to Cover

- Enrollment Trends and Projection
- **Revenues**
  - **Parish Subsidy**
  - **Tuition**
  - Fundraising and Other
- Costs
- Net Result
  - How are we doing
  - Current issues

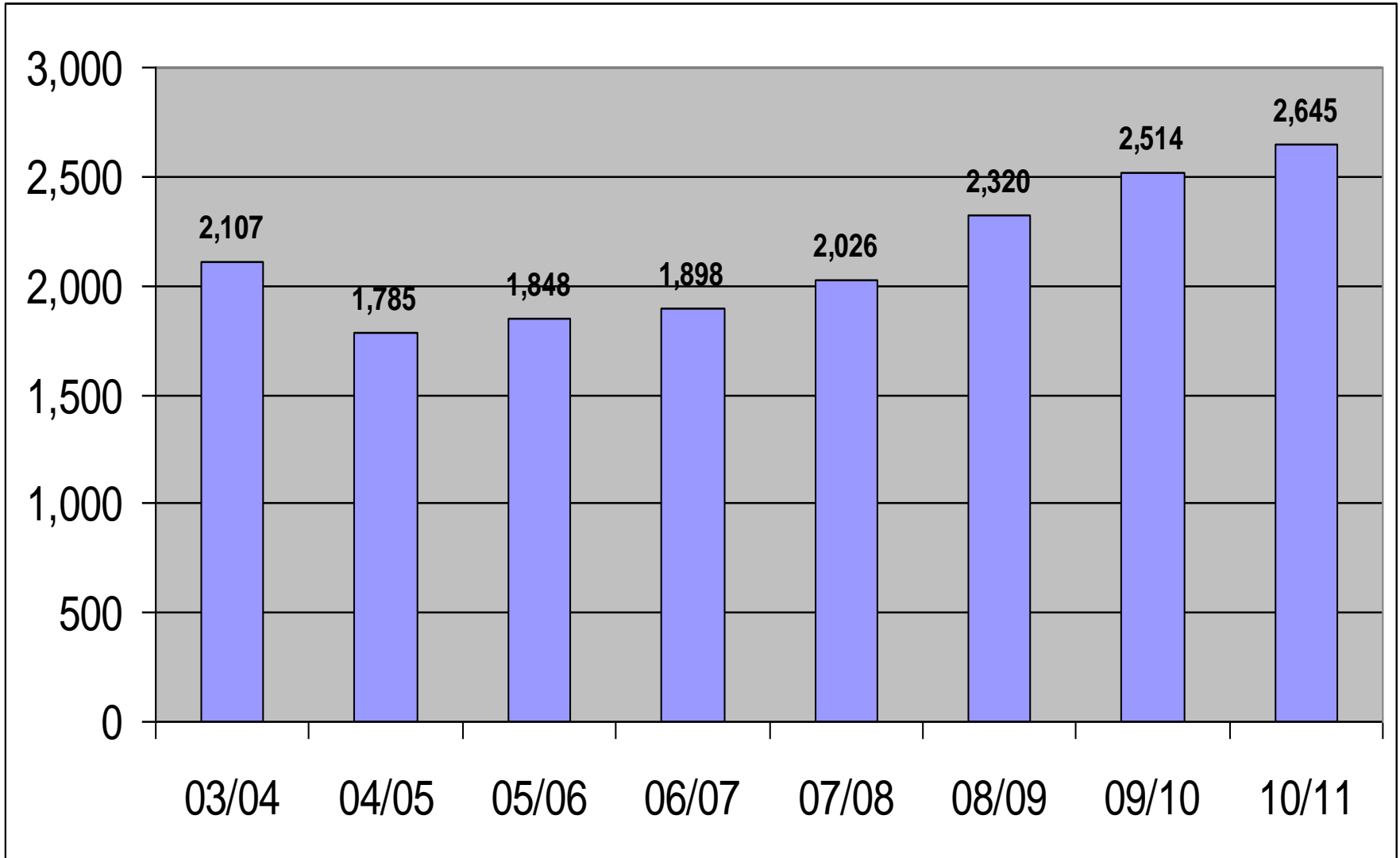
# Parish Subsidy in Total

lower enrollment and pressure within parish budgets



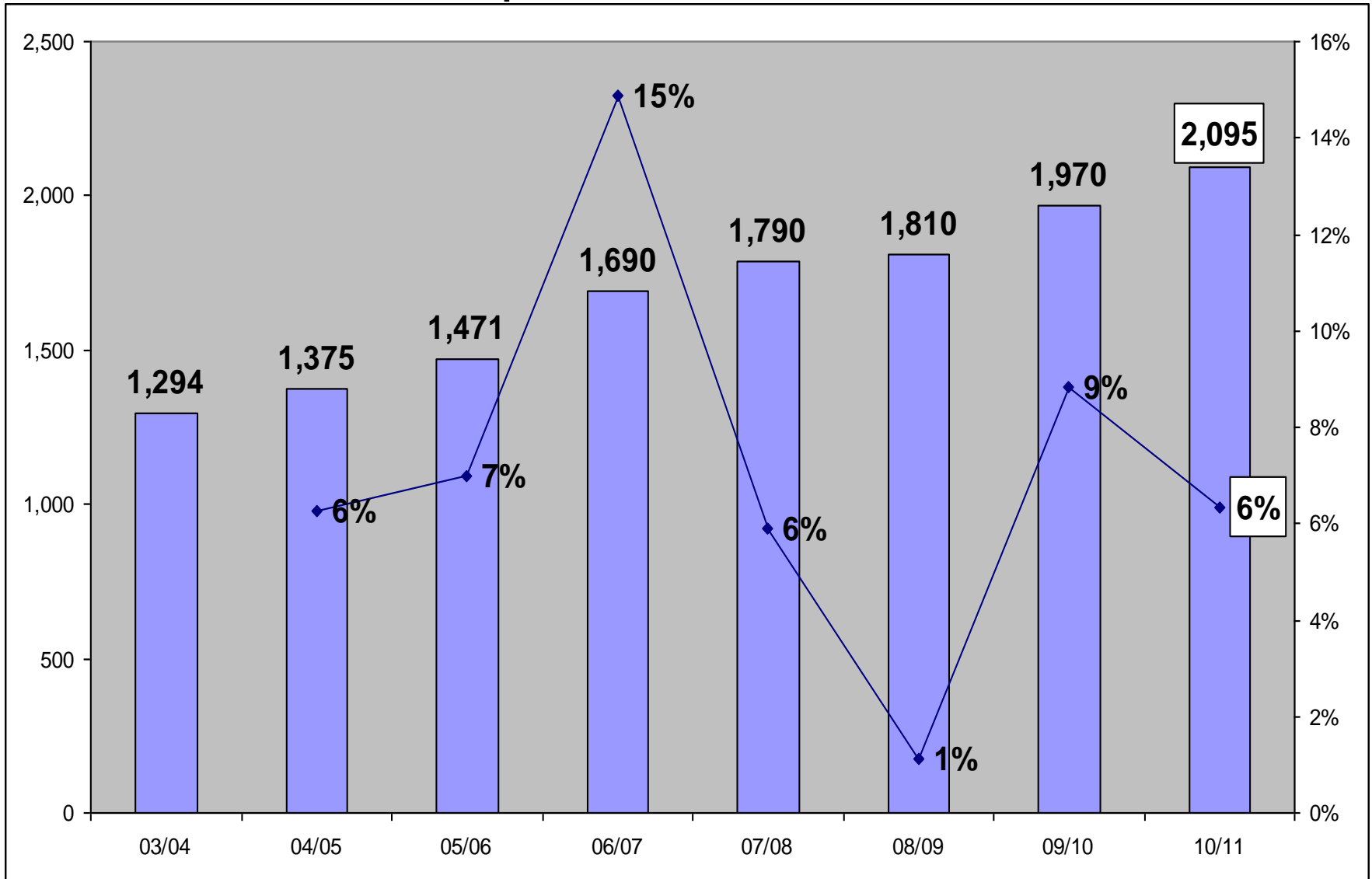
# Parish Subsidy per Student

(still going up: enrollment drops at faster rate than subsidy)



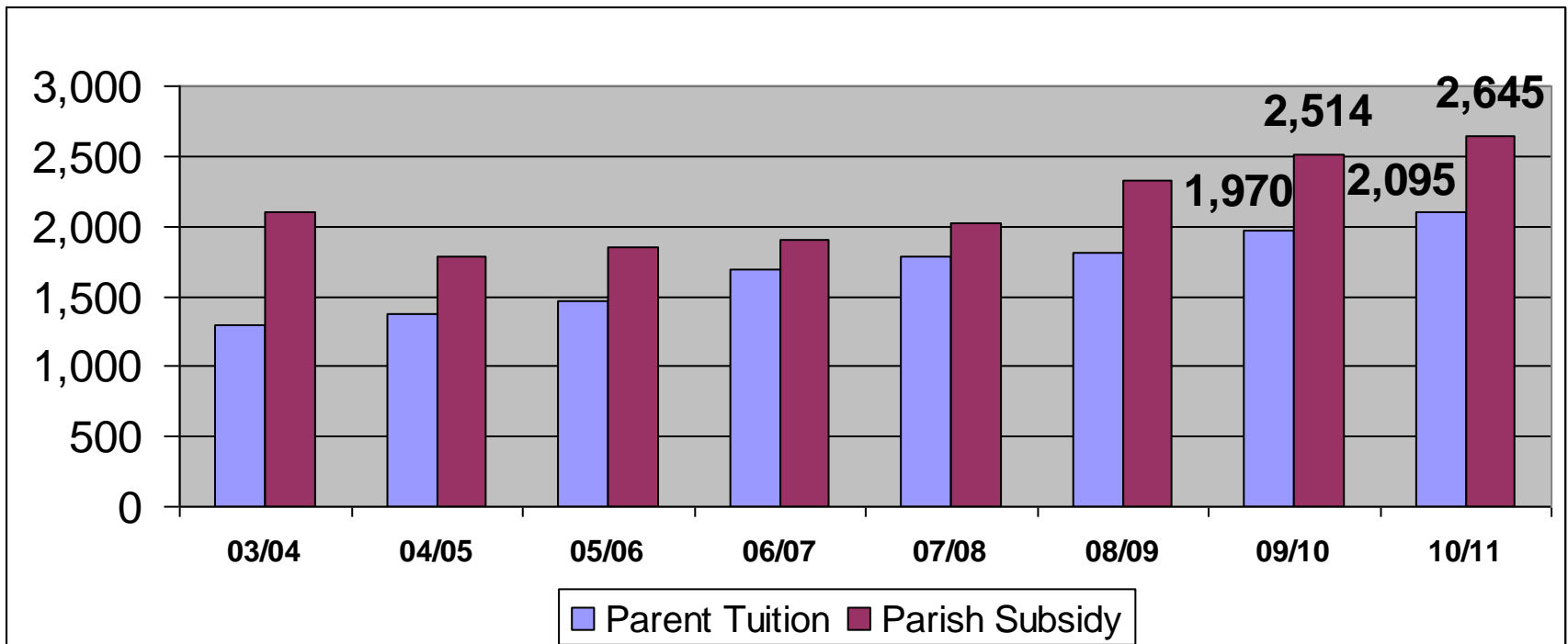
# Tuition

## Historical Perspective and Rates for 10/11

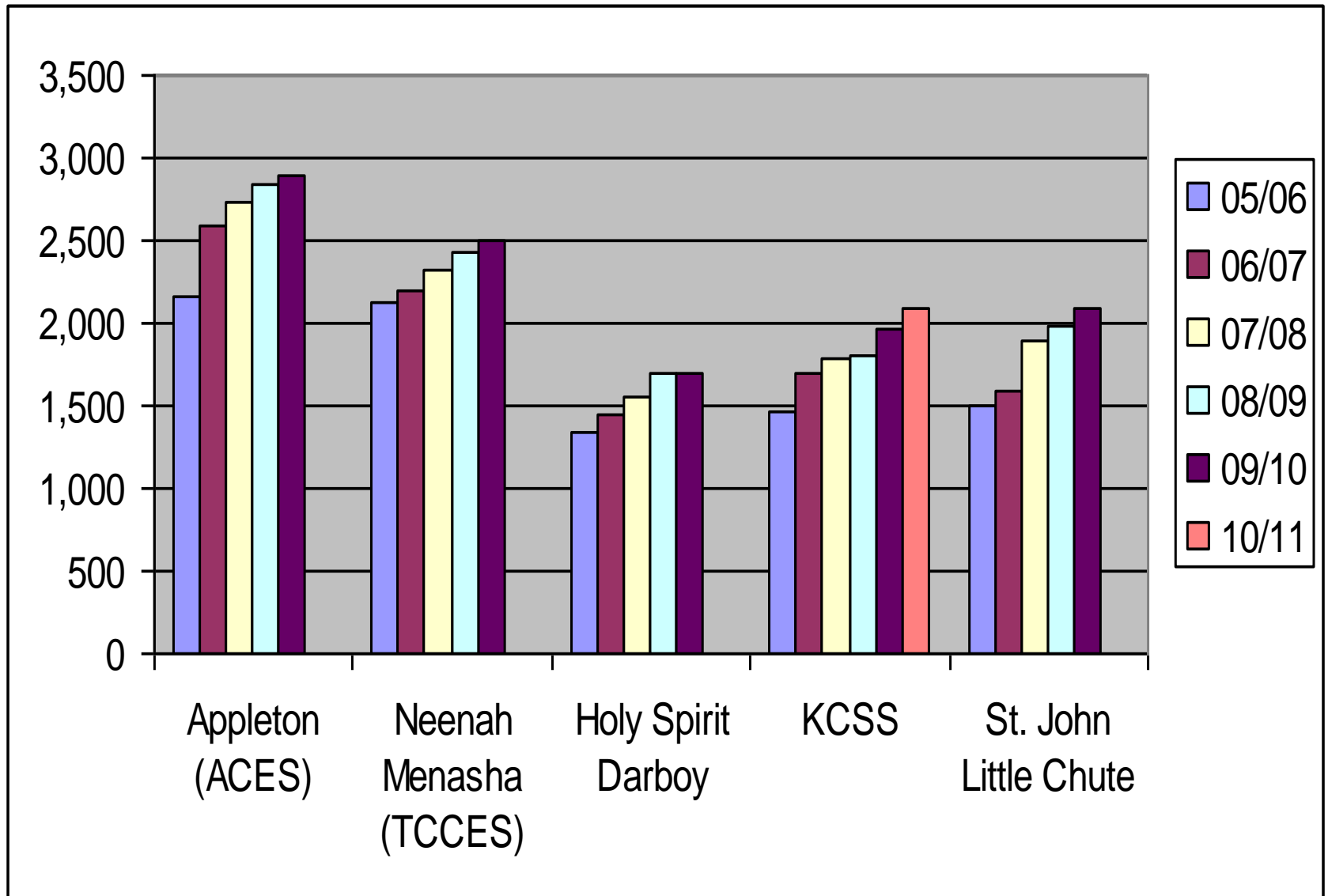


# Parents vs. Parish Balance

(cost per student)



# Tuition: How do we Compare?

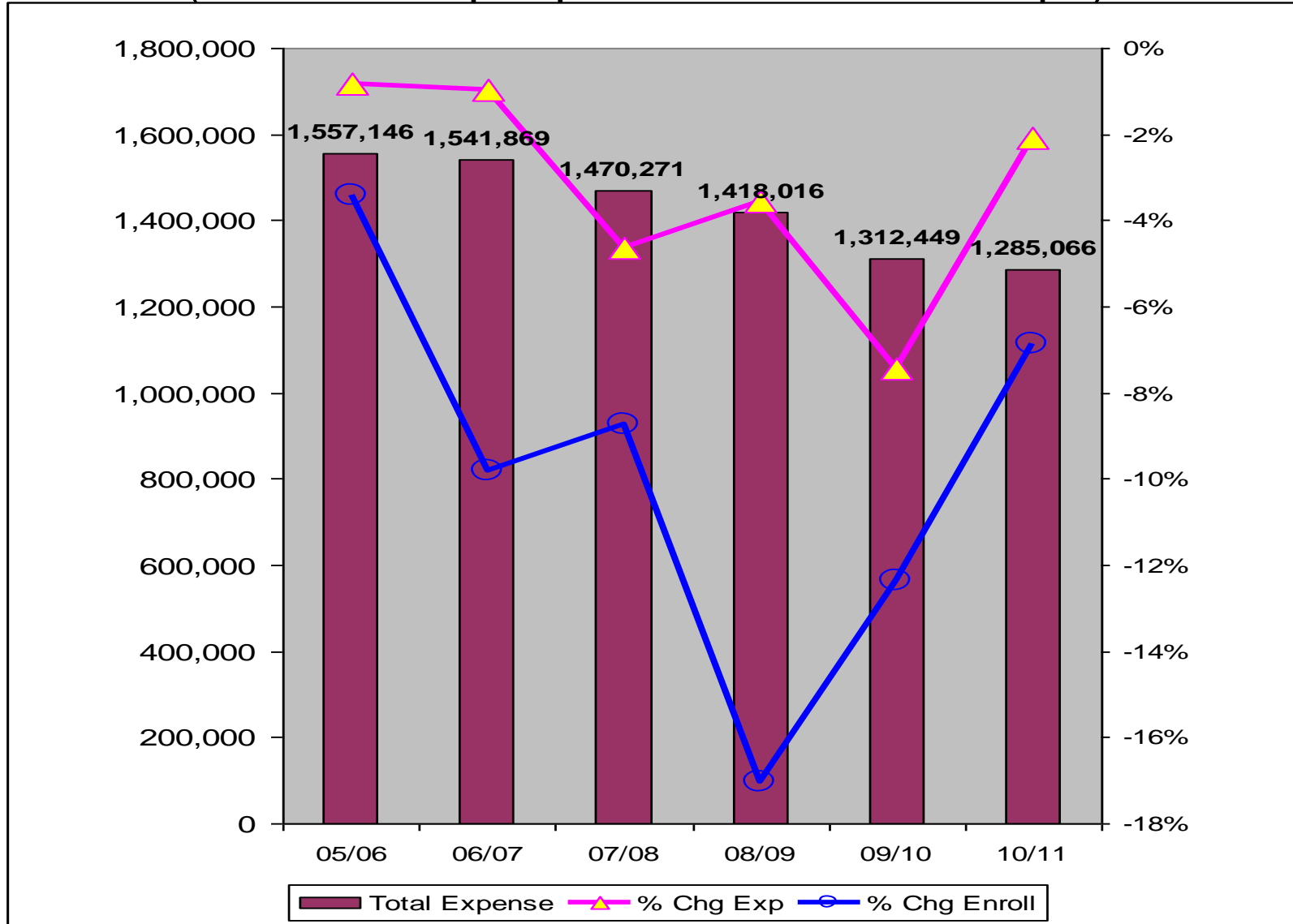


# Topics to Cover

- Enrollment Trends and Projection
- Revenues
  - Parish Subsidy
  - Tuition
  - Fundraising and Other
- **Costs**
- Net Result
  - How are we doing
  - Current issues

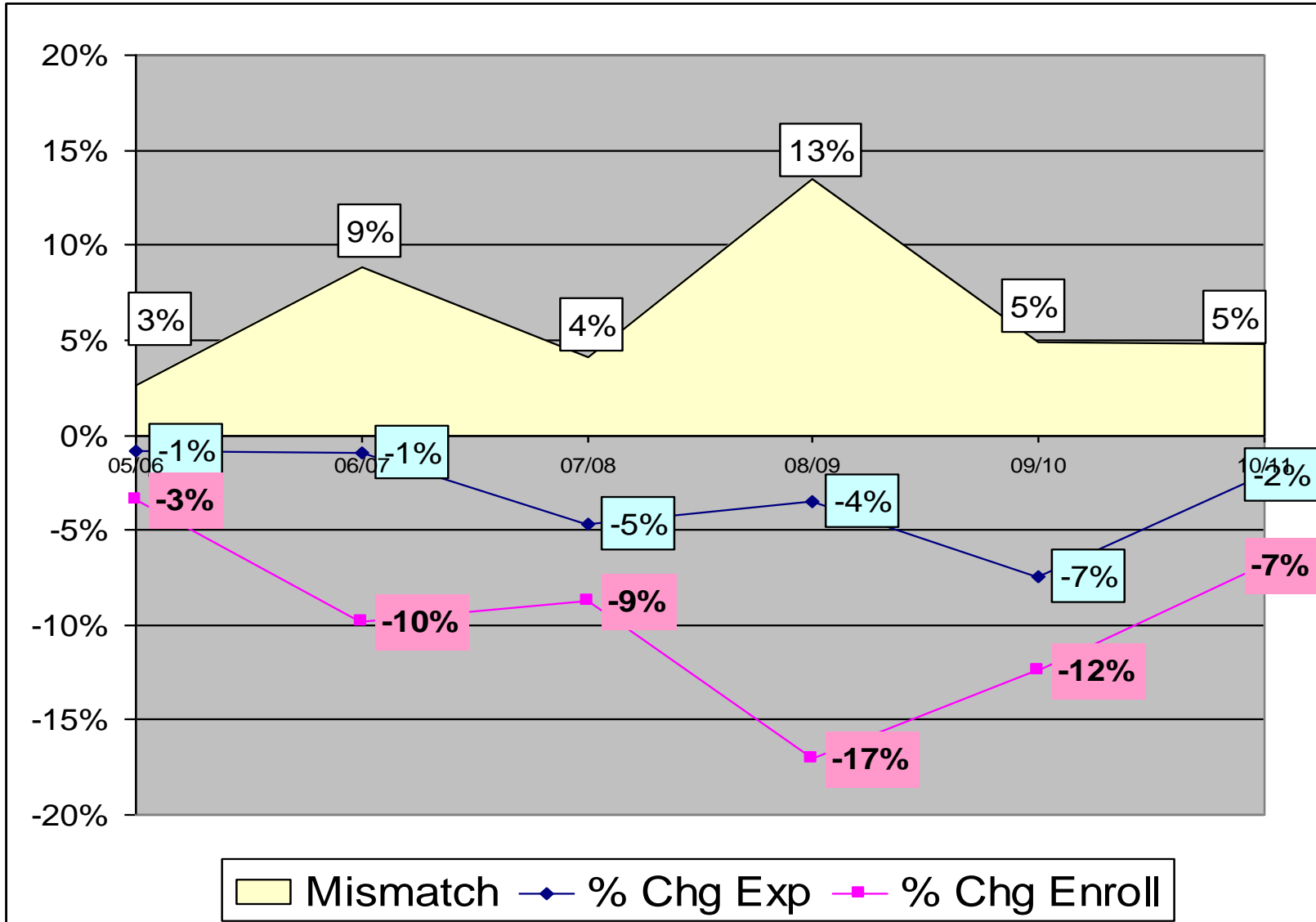
# Expense Reductions History

(have not kept up with enrollment drops)



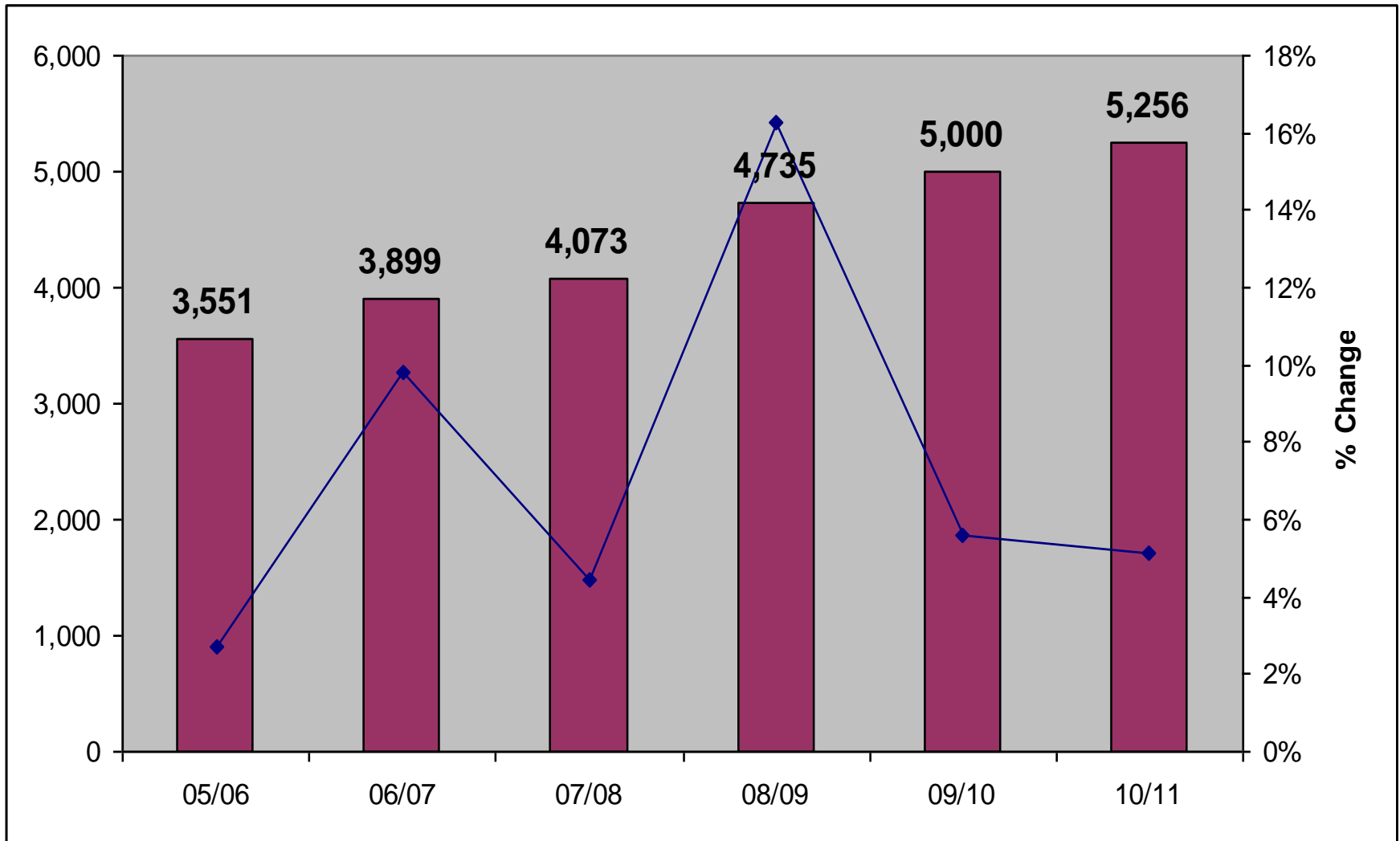
# Enrollment vs. Expense

(Mismatch in Rate of change)



# Total Cost per Student

(preschool counted at 0.5 each)

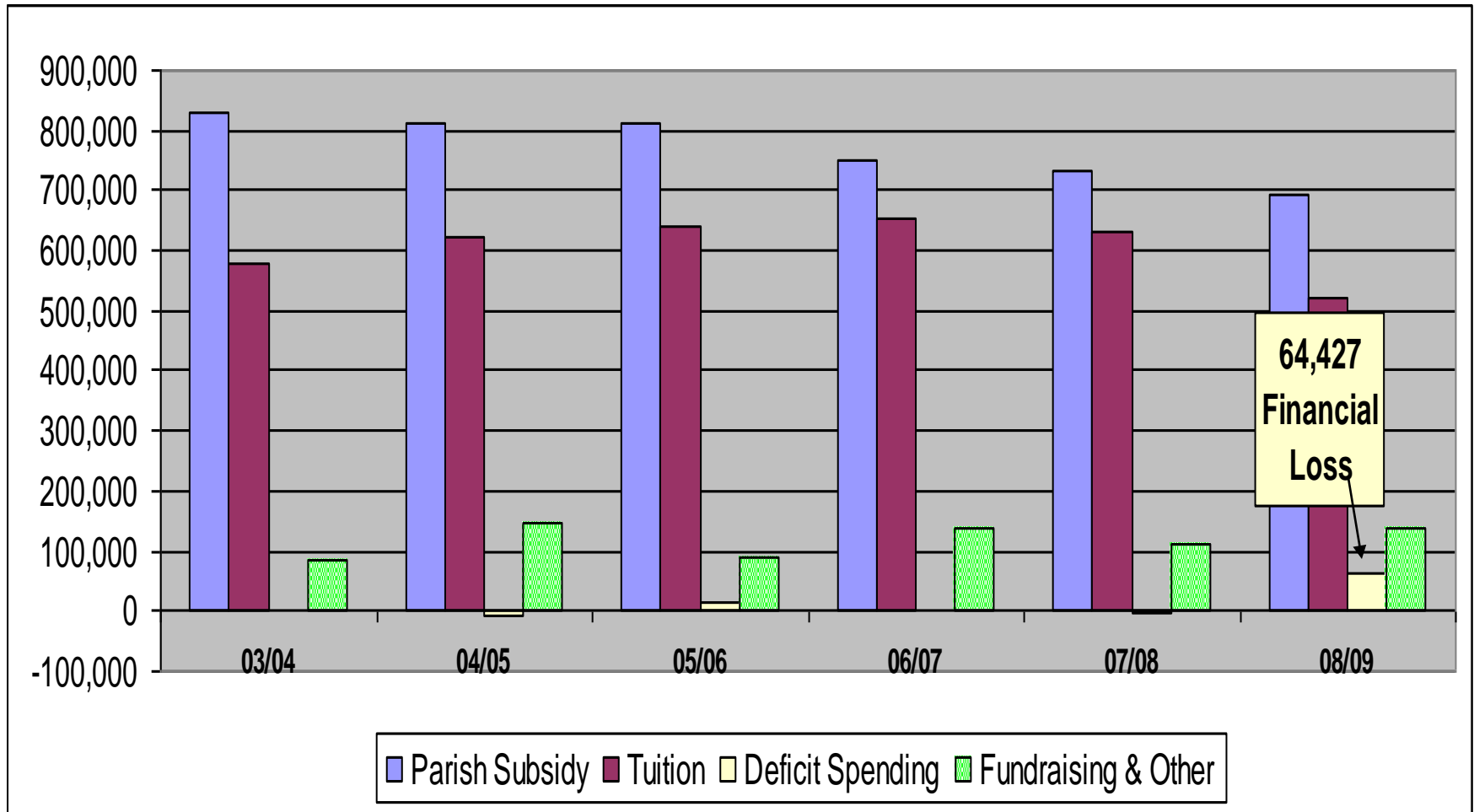


# Topics to Cover

- Enrollment Trends and Projection
- Revenues
  - Parish Subsidy
  - Tuition
  - Fundraising and Other
- Costs
- **Net Result**
  - **How are we doing**
  - **Current issues**

# 08/09 School Year was Difficult

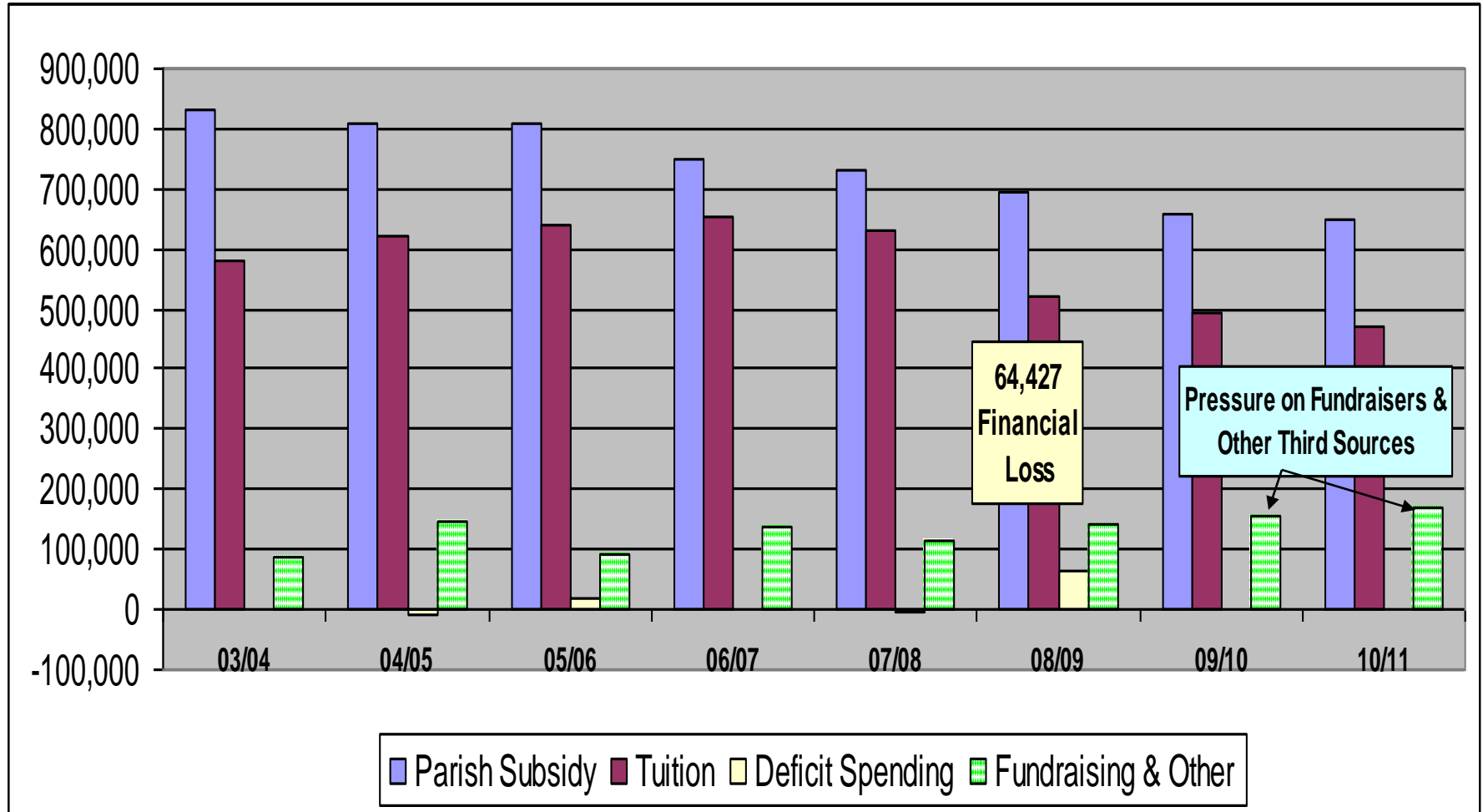
Significant financial loss – partially due to change in Diocesan Retirement Plan Funding Formula



# 09/10 and 10/11 Budgets Rely on:

a) Increase in Fundraising and Other Sources,  
and/or

b) Expense Reduction



# Current Financial Issues

- How to Recover from 08/09 Loss?
  - and early warning systems so doesn't reoccur
- How to Break Even in 09/10?
  - Success of Fundraisers is critical
  - Cost savings anywhere?
- Outstanding, overdue Receivables
  - Past due tuition
  - Subsidy difficulties at Holy Cross
- Facility Consolidation w/in 5-year Plan?
  - Fewer students in total today than at HC 4 years ago
  - What is your opinion? Worthy of consideration?

# Financial Facts to Feel Good About

- We have some financial reserves
- We have an “Endowment” Fund
  - Balance > \$600,000
  - Provides \$30,000/yr benefit to our budget
- We enjoy full support of our Parishes
  - KCSS + HC Finance + St.KD Finance
- Not a Financially Driven Mission
- Alumni and Support w/in the Community
  - Working to foster even greater support

# KCSS Financial Facts & Figures

- Questions, Comments and Observations
- Today and/or anytime:  
e-mail: [scott.engmann@voith.com](mailto:scott.engmann@voith.com)
- Volunteer Board Members - Ambassadors and Advocates for Quality and Sustainable Catholic Education in Kaukauna